



# Liana Alexandra

Roumania, Bucarest

## TWO POEMS FOR SOPRANO AND PIANO (Texte: Eugène van Itterbeek - 1.) Poem for Madonna from Neamt; 2.) Poem for Romania)

### About the artist

Liana Alexandra Composer Born: May 27, 1947, Bucharest, Romania Married to Serban Nichifor, composer: [http://www.free-scores.com/partitions\\_gratuites\\_serbannichifor.htm](http://www.free-scores.com/partitions_gratuites_serbannichifor.htm)

Studies

1965-1971 - "Ciprian Porumbescu" University of Music, Bucharest, Composition Department. Awarded the special scholarship "George Enescu"

1974, 1978, 1980, 1984 - international courses of composition at Darmstadt, West Germany

1983 - an USIA stipendium in USA

PhD in Musicology

AT PRESENT: Master in music; Professor at the National University of Music of Bucharest, (teaching composition, orchestration and musical analyses), Member of Duo Intermedia and co-director of the NUOVA MUSICA CONSONANTE-LIVING MUSIC FOUNDATION INC.(U.S.A) Festival, with Serban Nichifor

Selected Works

Symphonic, vocal-symphonic and concert music, music for opera

Symphony I (1971)

Cantata for women's choir and... (more online)

**Qualification:** PROFESSOR DOCTOR IN COMPOSITION AND MUSICOLOGY

**Associate:** GEMA - IPI code of the artist : I-000402252-8

**Artist page :** <https://www.free-scores.com/Download-PDF-Sheet-Music-lianaalexandra.htm>

### About the piece



**Title:** TWO POEMS FOR SOPRANO AND PIANO [Texte: Eugène van Itterbeek - 1.) Poem for Madonna from Neamt; 2.) Poem for Romania]

**Composer:** Alexandra, Liana

**Copyright:** Copyright © Liana Alexandra

**Publisher:** Alexandra, Liana

**Instrumentation:** Voice Soprano and piano

**Style:** Modern classical

Liana Alexandra on [free-scores.com](https://www.free-scores.com)



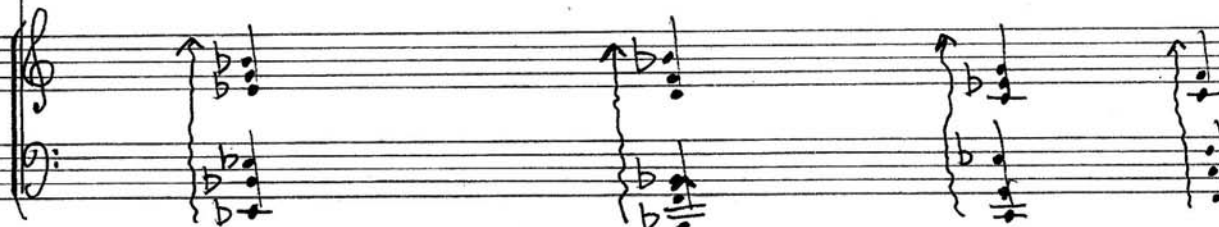
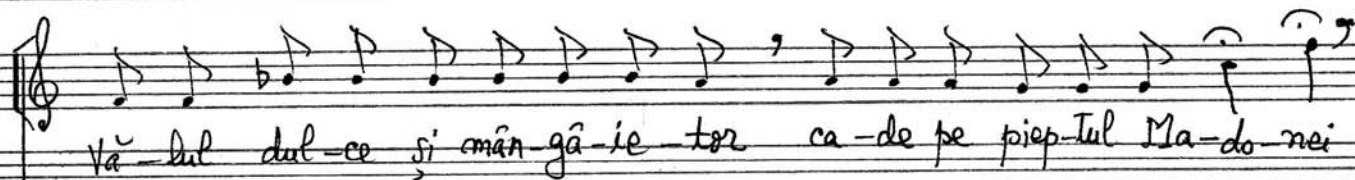
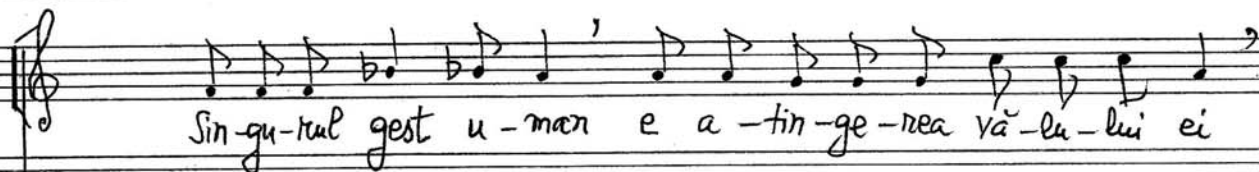
- listen to the audio
- share your interpretation
- comment
- contact the artist

# POEM PENTRU MADONA DE LA HEAMT

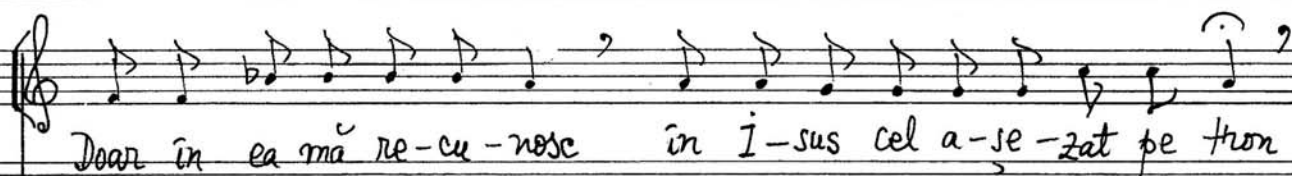
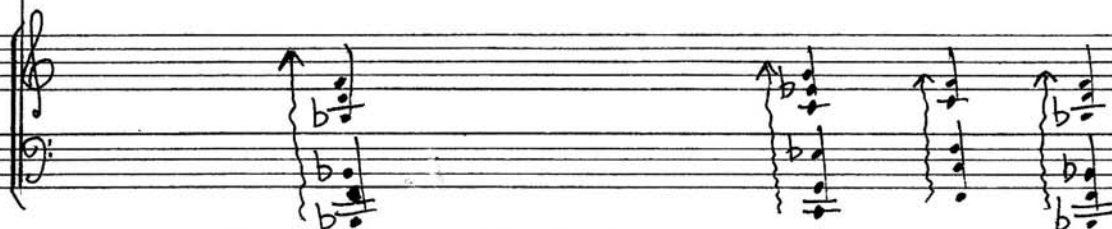
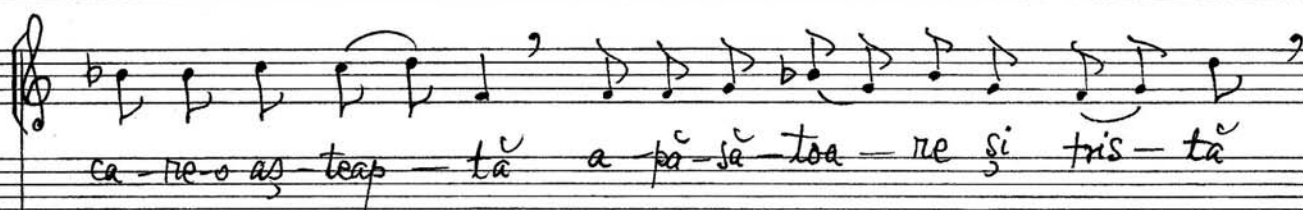
versuri: Eugène Van Ifferbeek

muzică: Liana Alexandra

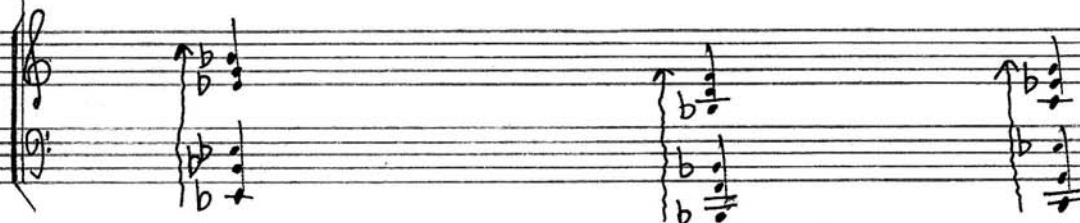
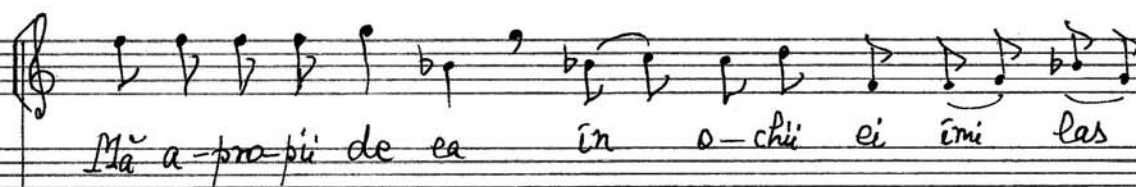
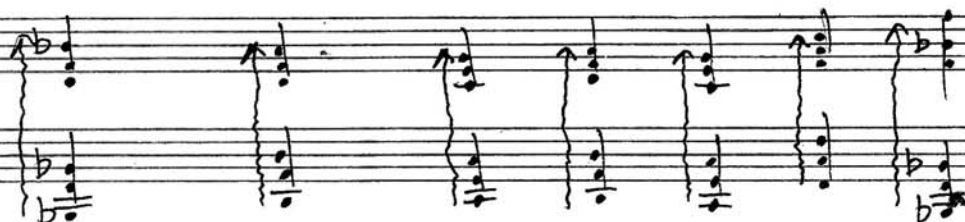
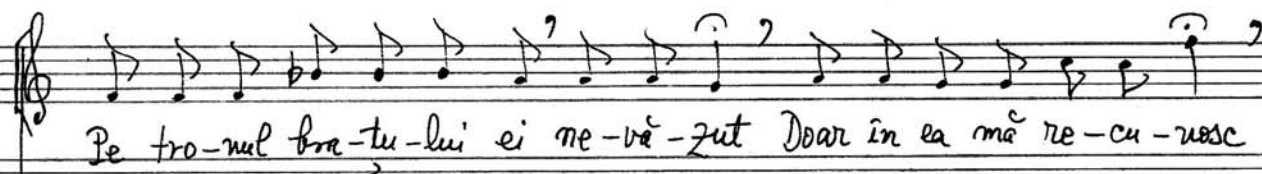
Copyright © Liana Alexandra  
ISMN 000.72.96.94.37  
000.72.96.95.35



-2-



-3-





- 4 -

în - o-chi ei îmi las o-chi să se li-nis-teas-că

LARGO

Sin-gu-rul gest u-man E a-tin-ge-rea vă-lui ei

Mall... molto

vă-lul dul-ce măn-gă-ie-tor ca-de pe piep-tul Ma-do-nei

Handwritten musical score for "Liane" by Franz Schubert. The score is written on two staves. The top staff is in treble clef and the bottom staff is in bass clef. The key signature has one flat (B-flat). The tempo is marked "Allegretto" and the time signature is "3/4". The score includes a melody with a long slur and a piano accompaniment. Dynamics include "mp" (mezzo-piano) and "pp" (pianissimo). The piece ends with a double bar line and a repeat sign.

Liana Alexandra  
12 Oct. 1994

# POEM PENTRU ROMÂNIA

versuri: Eugène Van Itterbeek

muzica: Liana Alexandra

Copyright © Liana Alexandra  
ISMN 000.72.96.94.37  
000.72.96.95.35

Soprano

6/8

Tu ești toa-tă nu-mai par-fum de

piano

6/8

mie - re su - ind din un-de-le ma-ti - na —

le ce se-n-al-tă a-se-meni u-nei a-ripi de gi-



Handwritten musical score for the first system. The vocal line (treble clef) begins with a half note G4, followed by a half note A4, and then a half note B4. The lyrics are "-gant an-co - ra-te în pă-mân - tul". The piano accompaniment (bass clef) consists of a continuous eighth-note pattern: G3, A3, B3, C4, D4, E4, F4, G4.

Handwritten musical score for the second system. The vocal line (treble clef) starts with a half note G4, followed by a half note A4, and then a half note B4. The lyrics are "tău Tu esti toa-tă nu-mai par —". The piano accompaniment (bass clef) continues the eighth-note pattern: G3, A3, B3, C4, D4, E4, F4, G4.

Handwritten musical score for the third system. The vocal line (treble clef) begins with a half note G4, followed by a half note A4, and then a half note B4. The lyrics are "fum de ruie — re ce ur-că din o-chi vi — su — lui". The piano accompaniment (bass clef) continues the eighth-note pattern: G3, A3, B3, C4, D4, E4, F4, G4.



plin de do- rin — ta Tu esti toa — ta nu-mai par-fum de

mie — re iar pe pă-mân-tul mă-tă-sos și

tan — dru în-flo- resc sal-că-mii albi și nu-fe-

Handwritten musical score for the first system. The vocal line (treble clef) contains the lyrics: "rui nu-fe- rui zâm-bind lu-mi-ni". The piano accompaniment consists of two staves (treble and bass clefs) with chords and moving lines.

Handwritten musical score for the second system. The vocal line (treble clef) contains the lyrics: "Si as-cult cu Ba-co-vi-a ma-te-ri-a plân-gând". The tempo marking "Rubato" is written above the first measure. The piano accompaniment consists of two staves (treble and bass clefs) with sustained chords.

Handwritten musical score for the third system. The vocal line (treble clef) contains the lyrics: "și cân-te-ce-le și mur-mu-rul mo-no-ton". The piano accompaniment consists of two staves (treble and bass clefs) with sustained chords.

in-tre pe-re-ti ce-lesti pe ca-re Dom-nul le in-no-bi-

lea-ză in-tu bi-se-rici pe ca-re sunt pie-ta-te

lu-mea Ve-chiul si No-ul Tes-ta-ment



Tu ești toa-tă nu-mai par-fum de mie — re

su — ind din un-de-le ma-ti — na — le

ce se-n-al-tă a-se-meni u-nei a-răpi de gi-gant



-7-

an-co-ra-te în pă-mân-tul tău

pe ca-re sunt pic-ta-te lu-mea ve-chiul

și No-ul Tes-ta-ment

Liana Alexandra  
21 Sept. 1994

Copyright © Liana Alexandra  
ISMN 000.72.96.94.37  
000.72.96.95.35